

Construction Notice – Electrical Upgrade Work

156 Street and Fleetwood Drive, Surrey

Aug 13, 2024

We're working closely with the Surrey Langley SkyTrain Project team to accommodate the rapid transit extension from Surrey to Langley. This work includes the installation of a duct bank to accommodate the relocation of power lines from the north side of Fraser Highway to the south side.

A duct bank is a series of plastic conduits encased in concrete that house and protect underground cables. Construction will result in some eastbound and westbound lane closures and will impact driveway access on Fraser Highway.

Where: 156 Street and Fleetwood Drive in Surrey.

When: Anticipated to start August 19 with targeted completion by end of August.

Working Hours: Monday to Saturday from 7 a.m. to 5 p.m.

This work requires temporary traffic pattern changes. Traffic will be reduced to a single lane, in each direction along Fraser Highway. Access to Fleetwood Drive from 156 Street will be restricted. Please refer to page 2 for a map.

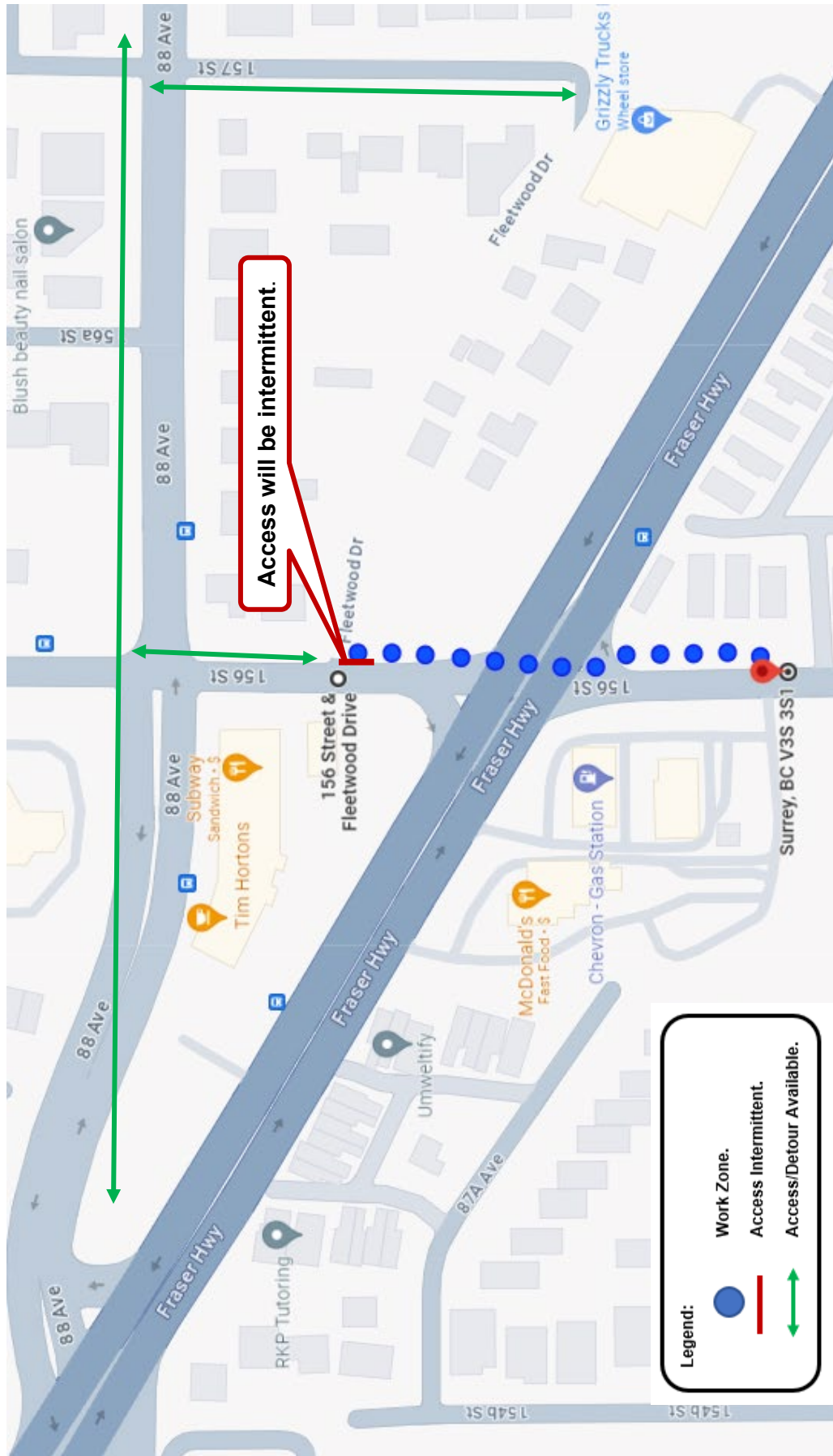
- Access to Fleetwood Drive will be maintained from 157 Street via 88 Avenue.
- Access to businesses and residences from Fraser Highway and 88 Avenue will be maintained.

Safety is our top priority. Sidewalks, bike lanes and bus stops on this route will be impacted and may not be available. Please follow the onsite signage provided by TransLink and the direction of the crew on site.

Drivers are advised to plan ahead and expect delays. Please reduce speed in the construction zone and follow the directions of traffic control personnel and posted signage.

If you have any questions or would like more information about our work to relocate the power lines and equipment, please contact us at 1-866-647-3334. Look for additional updates at www.bchydro.com/skytrain.

For inquiries directly related to the SkyTrain extension project, please contact surreylangleyskytrain@gov.bc.ca



Above: The work zone for ductbank work on Fraser Highway at 156 Street and Fleetwood Drive is highlighted in blue. Access routes are in green.